

DIAMOND POLISHING PRODUCTS



Diamond Pastes

Diamond Suspensions

Diamond Gels

Diamond Compound type HD Rapid WS Water and Alcohol soluble

Diamond paste on water-soluble basis, with application of monocrystalline diamonds ensures high quality surface polishing almost in all types of a materials.

Agglomerate-free distribution of diamonds in abrasive film.

Absolutely ecological water-base.

Diamond Compound type HD Rapid WS, Water and Alcohol soluble, High concentration

Product Type	Size DIN, µm	Size CSN, µm	Colour code	Article code, Dose 10gr	Dose 10gr, EUR	Article code, Dose 20gr	Dose 20gr, EUR
HD Rapid WS 0.15	0.15	0-0.25	gray	111 015	9,70	121 015	18,50
HD Rapid WS 0.25	0.25	0-0.5	gray	111 025	9,70	121 025	18,50
HD Rapid WS 0.5	0.5	0-1	gray	111 050	8,90	121 050	15,50
HD Rapid WS 1	1	0.5-1.5	blue	111 101	8,90	121 101	15,50
HD Rapid WS 1-2		1-2	blue	111 102	8,90	121 102	15,50
HD Rapid WS 2-3		2-3	blue	111 104	8,90	121 104	15,50
HD Rapid WS 3	3	2-4	green	111 103	9,70	121 103	17,50
HD Rapid WS 3-5		3-5	green	111 105	9,70	121 105	17,50
HD Rapid WS 5-7		5-7	green	111 107	9,70	121 107	17,50
HD Rapid WS 6	6	4-8	yellow	111 106	9,70	121 106	17,50
HD Rapid WS 7-10		7-10	yellow	111 108	9,70	121 108	17,50
HD Rapid WS 9	9	8-12	red	111 109	9,70	121 109	17,50
HD Rapid WS 10-15		10-15	red	111 112	11,60	121 112	22,50
HD Rapid WS 14	14	10-20	brown	111 114	11,60	121 114	22,50
HD Rapid WS 15-20		15-20	black	111 117	11,60	121 117	22,50
HD Rapid WS 25	25	20-30	mahogany	111 125	11,60	121 125	22,50
HD Rapid WS 30-40		30-40	violet	111 135	13,50	121 135	26,50
HD Rapid WS 45	45	40-50	violet	111 145	13,50	121 145	26,50
HD Rapid WS 40-60		40-60	orange	111 150	13,50	121 150	26,50
HD Rapid WS 60	60	40-80	orange	111 160	13,50	121 160	26,50

Diamond Compound type HD Rapid WS, Water and Alcohol soluble, Extra High concentration

Product Type	Size DIN, µm	Size CSN, µm	Colour code	Article code, Dose 10gr	Dose 10gr, EUR	Article code, Dose 20gr	Dose 20gr, EUR
HD Rapid WS 0.15	0.15	0-0.25	gray	110 015	13,50	120 015	25,50
HD Rapid WS 0.25	0.25	0-0.5	gray	110 025	13,50	120 025	25,50
HD Rapid WS 0.5	0.5	0-1	gray	110 050	10,90	120 050	19,60
HD Rapid WS 1	1	0.5-1.5	blue	110 101	10,90	120 101	19,60
HD Rapid WS 1-2		1-2	blue	110 102	10,90	120 102	19,60
HD Rapid WS 2-3		2-3	blue	110 104	10,90	120 104	19,60
HD Rapid WS 3	3	2-4	green	110 103	14,50	120 103	24,50
HD Rapid WS 3-5		3-5	green	110 105	14,50	120 105	24,50
HD Rapid WS 5-7		5-7	green	110 107	14,50	120 107	24,50
HD Rapid WS 6	6	4-8	yellow	110 106	14,50	120 106	24,50
HD Rapid WS 7-10		7-10	yellow	110 108	14,50	120 108	24,50
HD Rapid WS 9	9	8-12	red	110 109	14,50	120 109	24,50
HD Rapid WS 10-15		10-15	red	110 112	18,50	120 112	35,20
HD Rapid WS 14	14	10-20	brown	110 114	18,50	120 114	35,20
HD Rapid WS 15-20		15-20	black	110 117	18,50	120 117	35,20
HD Rapid WS 25	25	20-30	mahogany	110 125	18,50	120 125	35,20
HD Rapid WS 30-40		30-40	violet	110 135	18,50	120 135	39,00
HD Rapid WS 45	45	40-50	violet	110 145	18,50	120 145	39,00
HD Rapid WS 40-60		40-60	orange	110 150	18,50	120 150	39,00
HD Rapid WS 60	60	40-80	orange	110 160	18,50	120 160	39,00

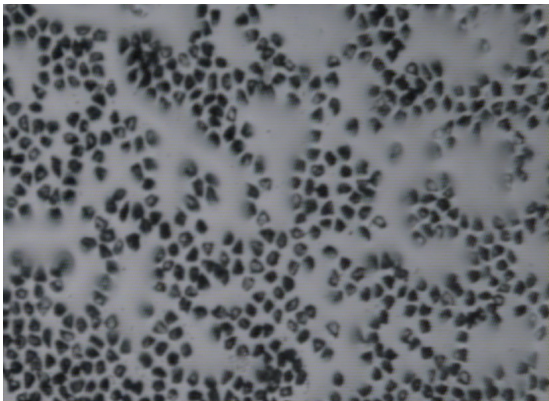
Diamond Compound type HD Rapid OS Oil and Alcohol soluble

Recommended for Moulding / Wire Drawing Dies industry.

The new polymer base development gives HD Rapid OS diamond pastes the great ability. Paste works in a wide range of temperatures, from minus to 150 degrees Celsius, including working on hot slanting surfaces where ordinary pastes is flowing. Paste is ecologically neutral, the storage time is unlimited.

The physical properties of the polymer base assist to the uniform distribution of single diamond grains in the abrasive layer, and limits the formation of agglomerates.

High quality polishing, together with increased material removal, guarantees excellent results and speed in work.



Diamond Compound type HD Rapid OS, Oil and Alcohol soluble, High concentration

Product Type	Size DIN, μm	Size CSN, μm	Colour code	Article code, Dose 10gr	Dose 10gr, EUR	Article code, Dose 20gr	Dose 20gr, EUR
HD Rapid OS 0,15	0.15	0-0.25	gray	211 015	9,90	221 015	18,50
HD Rapid OS 0,25	0.25	0-0.5	gray	211 025	9,90	221 025	18,50
HD Rapid OS 1	1	0.5-1.5	blue	211 101	8,90	221 101	15,20
HD Rapid OS 3	3	2-4	green	211 103	8,90	221 103	15,20
HD Rapid OS 6	6	4-8	yellow	211 106	8,90	221 106	15,20
HD Rapid OS 9	9	8-12	red	211 109	8,90	221 109	15,20
HD Rapid OS 14	14	10-20	brown	211 114	12,60	221 114	21,40
HD Rapid OS 25	25	20-30	mahogany	211 125	12,60	221 125	21,40
HD Rapid OS 45	45	40-50	violet	211 145	13,50	221 145	25,50
HD Rapid OS 60	60	40-80	orange	211 160	13,50	221 160	25,50

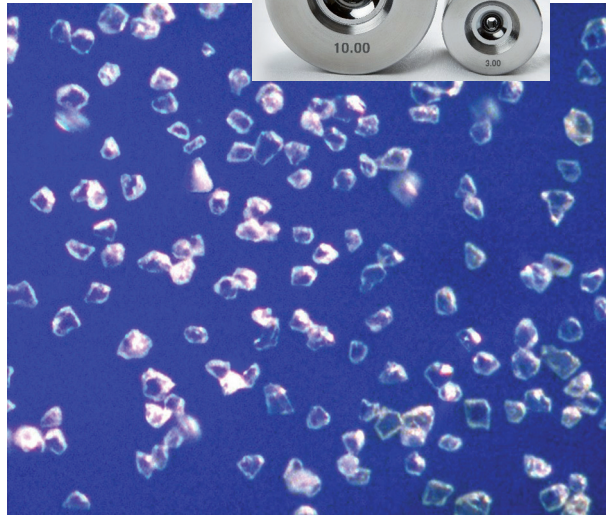
Diamond Compound type HD Rapid OS, Oil and Alcohol soluble, Extra High concentration

Product Type	Size DIN, μm	Size CSN, μm	Colour code	Article code, Dose 10gr	Dose 10gr, EUR	Article code, Dose 20gr	Dose 20gr, EUR
HD Rapid OS 0,15	0.15	0-0.25	gray	210 015	14,50	220 015	26,50
HD Rapid OS 0,25	0.25	0-0.5	gray	210 025	14,50	220 025	26,50
HD Rapid OS 1	1	0.5-1.5	blue	210 101	14,50	220 101	26,50
HD Rapid OS 3	3	2-4	green	210 103	14,50	220 103	26,50
HD Rapid OS 6	6	4-8	yellow	210 106	14,50	220 106	26,50
HD Rapid OS 9	9	8-12	red	210 109	14,50	220 109	26,50
HD Rapid OS 14	14	10-20	brown	210 114	18,50	220 114	35,00
HD Rapid OS 25	25	20-30	mahogany	210 125	18,50	220 125	35,00
HD Rapid OS 45	45	40-50	violet	210 145	21,50	220 145	39,00
HD Rapid OS 60	60	40-80	orange	210 160	21,50	220 160	39,00

Diamond Gels Water and Alcohol soluble

Recommended for Moulding / Wire Drawing Dies industry.

Viscosity is stable for a very long time.
Diamond particles uniformly distributed in gel-base.
Absolutely ecological gel-base.



Diamond Gel WS , Water and Alcohol soluble, Standard concentration

Product Type	Size DIN, µm	Size CSN, µm	Colour code	Article code, Dose 100gr	Dose 100gr, EUR	Article code, Dose 200gr	Dose 200gr, EUR
Diamond Gel 0,5 WS	0,5	0-1	gray	310 051	25	310 052	45
Diamond Gel 1 WS	1	0.5-1.5	blue	310 101	25	310 201	45
Diamond Gel 3 WS	3	2-4	green	310 103	25	310 203	45
Diamond Gel 6 WS	6	4-8	yellow	310 106	25	310 206	45
Diamond Gel 9 WS	9	8-12	red	310 109	25	310 209	45
Diamond Gel 14 WS	14	10-20	brown	310 114	25	310 214	45
Diamond Gel 25 WS	25	20-30	mahogany	310 125	25	310 225	45
Diamond Gel 35 WS	35	30-40	violet	310 135	25	310 235	45

Diamond Gel WS , Water and Alcohol soluble, High concentration

Product Type	Size DIN, µm	Size CSN, µm	Colour code	Article code, Dose 100gr	Dose 100gr, EUR	Article code, Dose 200gr	Dose 200gr, EUR
Diamond Gel 0,5 WS	0,5	0-1	gray	310 053	45	310 054	75
Diamond Gel 1 WS	1	0.5-1.5	blue	310 301	45	310 401	75
Diamond Gel 3 WS	3	2-4	green	310 303	45	310 403	75
Diamond Gel 6 WS	6	4-8	yellow	310 306	45	310 406	75
Diamond Gel 9 WS	9	8-12	red	310 309	45	310 409	75
Diamond Gel 14 WS	14	10-20	brown	310 314	45	310 414	75
Diamond Gel 25 WS	25	20-30	mahogany	310 325	45	310 425	75
Diamond Gel 35 WS	35	30-40	violet	310 335	45	310 435	75

Diamond suspensions ECO DIAMOND POLISH

Water and Alcohol soluble, used for flat honing and polishing.
 Short processing time for the desired roughness surface Ra reaches.
 Agglomerate-free distribution of diamonds in abrasive film.
 High suspension stability.
 Absolutely ecological base.



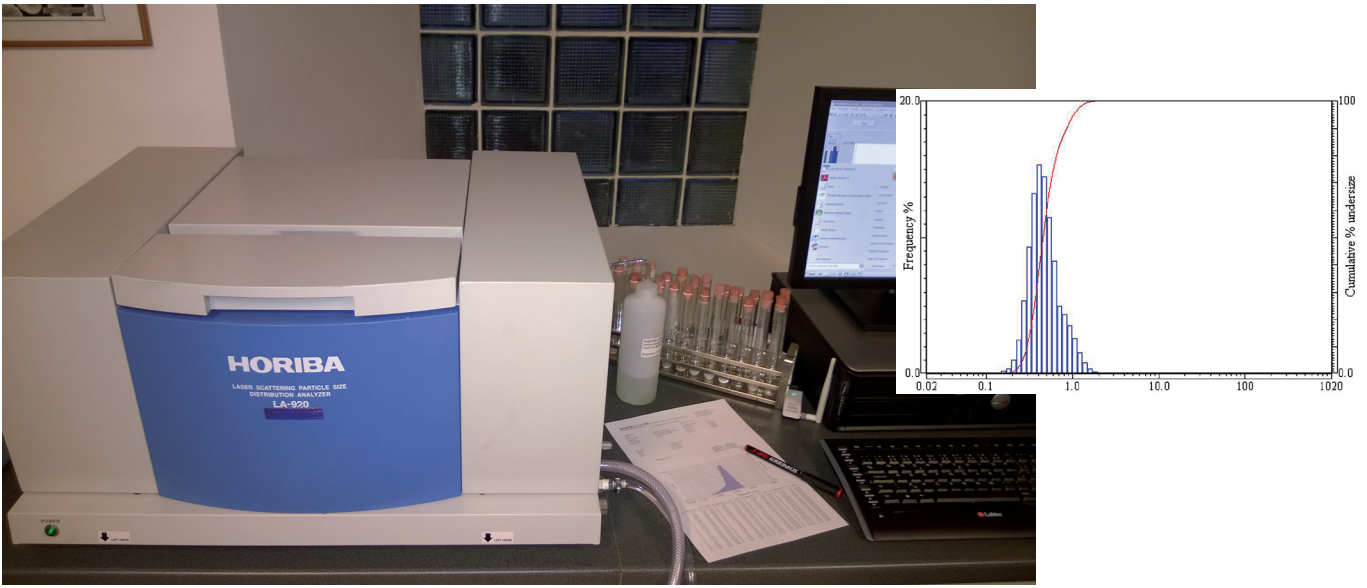
ECO DIAMOND POLISH WS suspension, Water and Alcohol soluble, monocrystalline diamonds

Product Type	Size DIN, μm	Size CSN, μm	Article code, Dose 400ml	Dose 400ml, EUR	Article code, Dose 3 ltr	Dose 3 ltr, EUR	Article code, Dose 5 ltr	Dose 5 ltr, EUR
ECO DIA POLISH WS 0.15	0.15	0-0.25	401 015	25	403 015	95	405 015	145
ECO DIA POLISH WS 0.25	0.25	0-0.5	401 025	25	403 025	95	405 025	145
ECO DIA POLISH WS 0.5	0.5	0-1	401 050	25	403 050	95	405 050	145
ECO DIA POLISH WS 1	1	0.5-1.5	401 101	25	403 101	95	405 101	145
ECO DIA POLISH WS 1-2		1-2	401 102	25	403 102	95	405 102	145
ECO DIA POLISH WS 2-3		2-3	401 104	25	403 104	95	405 104	145
ECO DIA POLISH WS 3	3	2-4	401 103	25	403 103	95	405 103	145
ECO DIA POLISH WS 3-5		3-5	401 105	25	403 105	95	405 105	145
ECO DIA POLISH WS 5-7		5-7	401 107	25	403 107	95	405 107	145
ECO DIA POLISH WS 6	6	4-8	401 106	25	403 106	95	405 106	145
ECO DIA POLISH WS 7-10		7-10	401 108	25	403 108	95	405 108	145
ECO DIA POLISH WS 9	9	8-12	401 109	25	403 109	95	405 109	145
ECO DIA POLISH WS 10-15		10-15	401 112	25	403 112	95	405 112	145
ECO DIA POLISH WS 14	14	10-20	401 114	25	403 114	95	405 114	145
ECO DIA POLISH WS 15-20		15-20	401 117	25	403 117	95	405 117	145
ECO DIA POLISH WS 25	25	20-30	401 125	25	403 125	95	405 125	145
ECO DIA POLISH WS 30-40		30-40	401 135	25	403 135	95	405 135	145
ECO DIA POLISH WS 45	45	40-50	401 145	25	403 145	95	405 145	145
ECO DIA POLISH WS 40-60		40-60	401 150	25	403 150	95	405 150	145

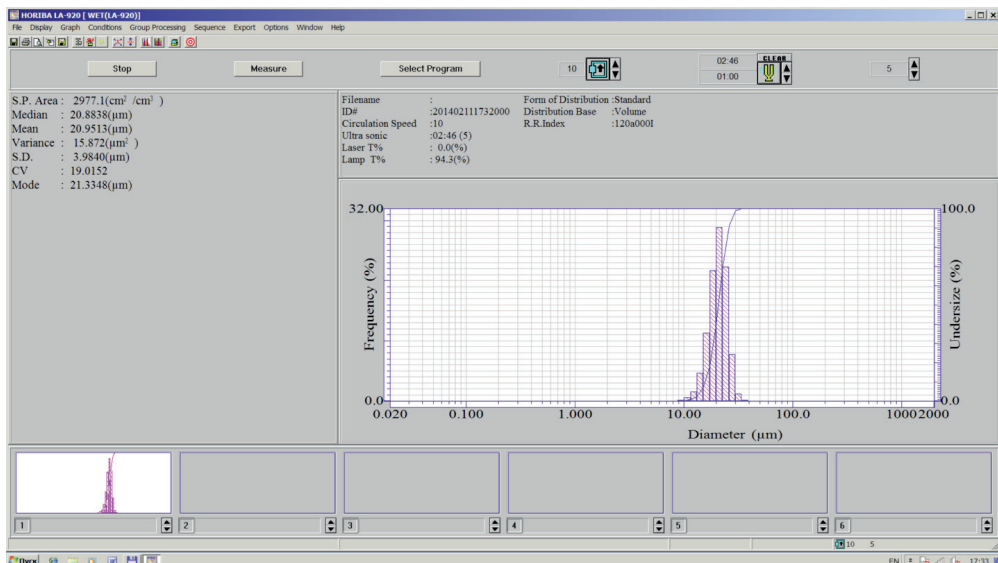
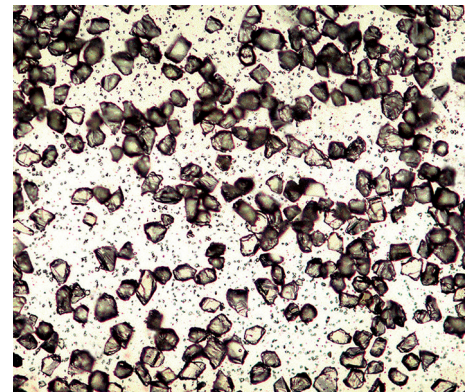
ECO DIAMOND POLISH WS suspension, dose 5 litres, wholesale price

Product Type	Dose 5 litres Q10	Dose 5 litres Q30
ECO DIA POLISH WS all sizes	89	82

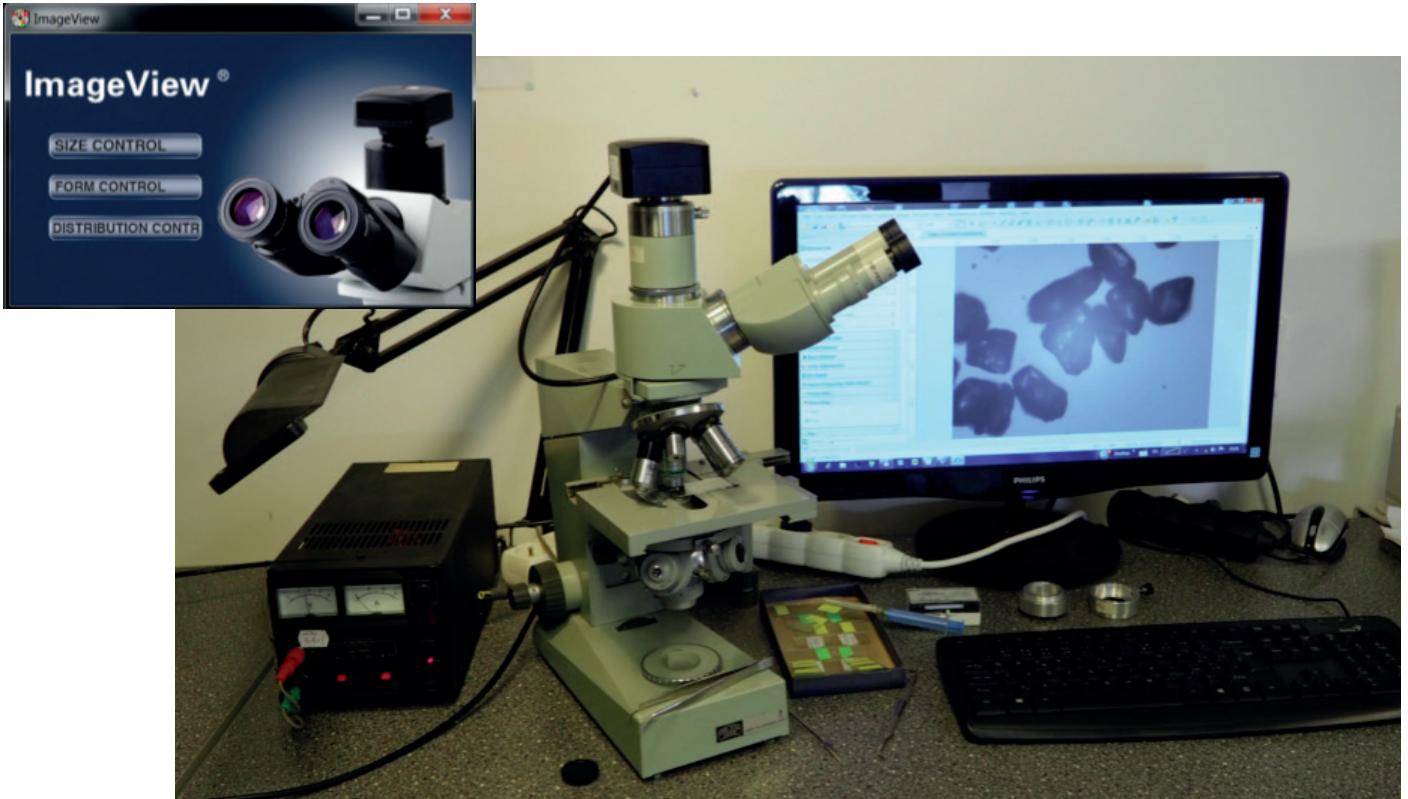
Particle Size Distribution



Diamond Powders pass check on laser granulometer Horiba, which certified by Reatch Technology GmbH, it guarantees consistency declared sizes according to DIN or CSN standards. High-speed control of micron size distribution of powder grain is provided on Laser Particle Size Analyzer. A beam of coherent light from helium-neon laser comes through the sample of analyzed powder, which is being suspended in liquid, and refracted. On the diffraction picture appears a number of concentric rings, with dia-meter depending on the size of grains. Measuring results are being given as a grain composition graph. It must be considered that the measurement results received on Laser Particle Size Analyzer need an adjustment with respect to the optical method of measurement declared in most state standards like FEPA, ANSI or GOST.

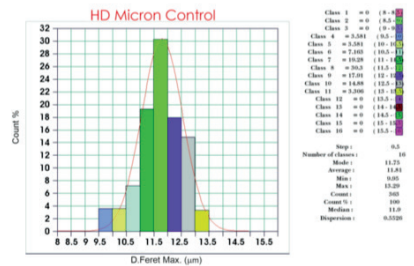


VideoTest Micron Control

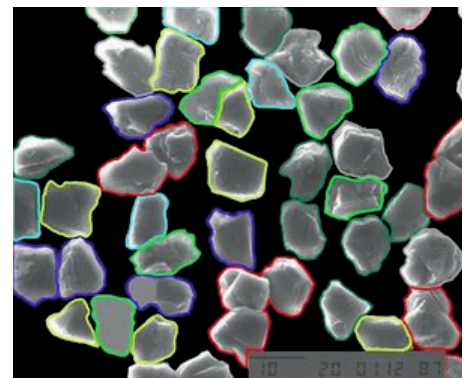
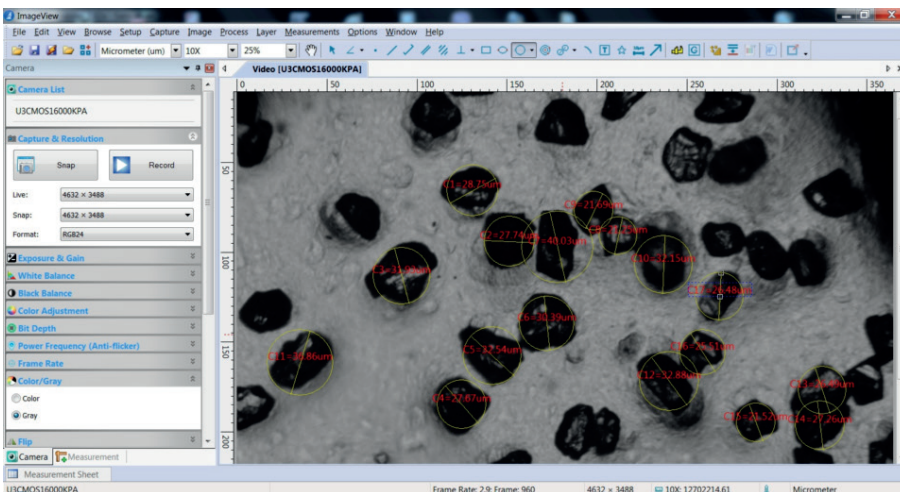


Optical microscope Zeiss equipped with high-resolution CMOS Camera and special Measurement Software VideoTest allows controlling precise size and shape distribution of grains. This is quite a slow method, featuring high accuracy of measuring and visual monitoring of samples micron powder, with sizes from 3 microns and more. Fine sizes of diamond powder from 0 up to 3µm are best controlled using an SEM microscope, SEM-photos, calibrated to measure size, are also processed by the measurement software.

Pathologic: 04.02.2003 15:17:19
Data: 04.02.2003



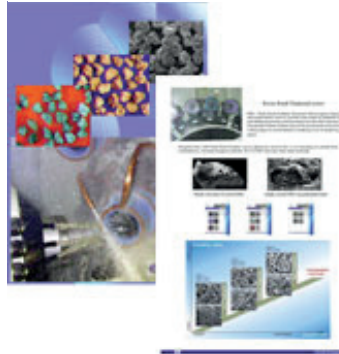
Class Name	Average	Min	Max	Count	Count %	Median
Class 1	0.000	?	?	0	0.000	0.000
Class 2	0.000	?	?	0	0.000	0.000
Class 3	0.000	?	?	0	0.000	0.000
Class 4	9.950	9.950	9.950	13	3.581	9.950
Class 5	10.453	10.453	10.453	13	3.581	10.453
Class 6	10.752	10.595	10.806	26	7.163	10.668
Class 7	11.419	11.228	11.498	70	19.284	11.458
Class 8	11.791	11.520	11.986	110	30.303	11.819
Class 9	12.262	12.052	12.357	65	17.906	12.331
Class 10	12.767	12.558	12.951	54	14.876	12.797
Class 11	13.197	13.107	13.287	12	3.306	13.107
Class 12	0.000	?	?	0	0.000	0.000
Class 13	0.000	?	?	0	0.000	0.000
Class 14	0.000	?	?	0	0.000	0.000
Class 15	0.000	?	?	0	0.000	0.000
Class 16	0.000	?	?	0	0.000	0.000
Total	11.807	9.950	13.287	363	100.000	11.896



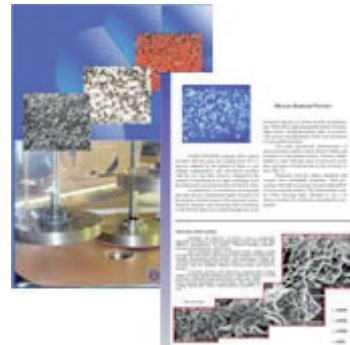


HARIS DIVISION
INDUSTRIAL DIAMOND

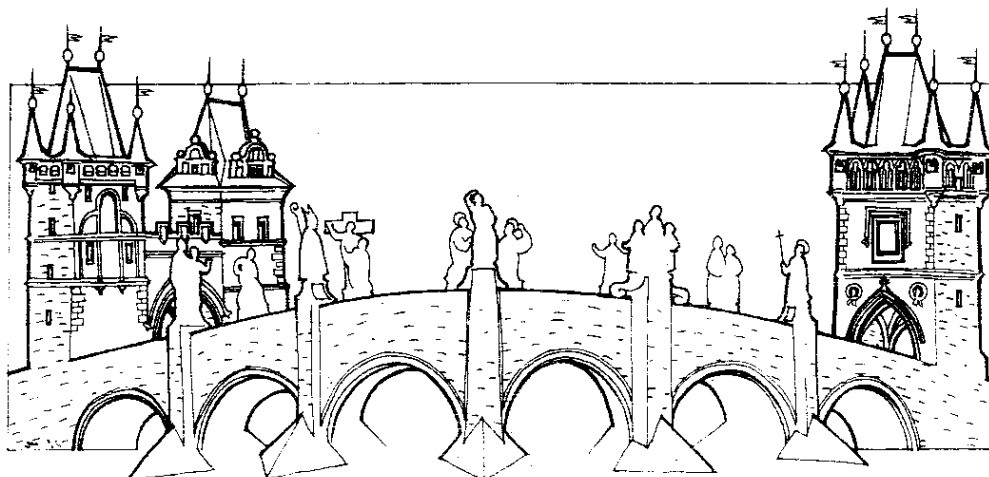
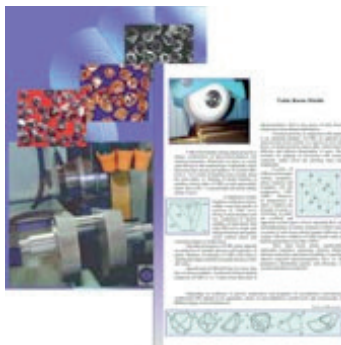
Resin Bond Diamond



Diamond Micron Rowder



Cubic Boron Nitride



www.harisdiamond.com
www.diamantovepasty.cz
info@diamantovepasty.cz

Tel: +420 241941549
Tel/Fax: +420 241941142
Psary 52, Prague-West, 252 44,
Czech Republic

All pictures and technical data used in this brochure are property of Haris Division. Unauthorized duplication is a violation of copyright law.